

The next generation of **Warming Cabinets**



D-Series Data Logging Blanket & Fluid Warming Cabinets

MADE
IN THE **USA**



www.macmedical.com

the **NEXT**
generation
of warming cabinets



D-Series

Data Logging
Blanket & Fluid
Warming Cabinets

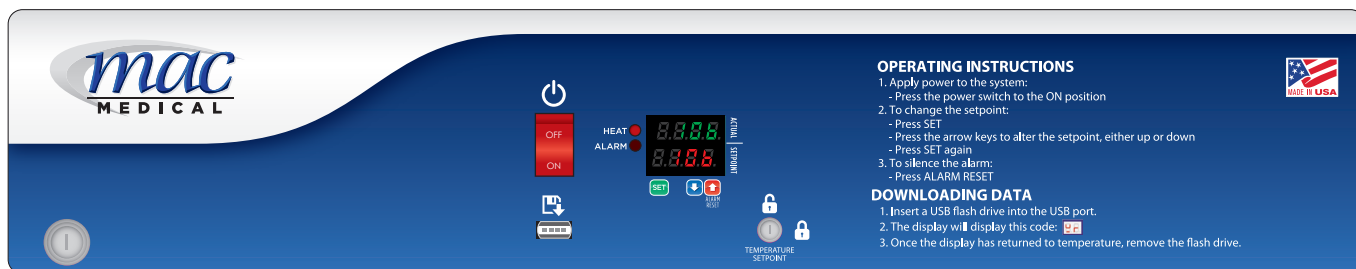
MAC Medical, Inc. is proud to announce the arrival of the D-Series (Data Logging) Blanket & Fluid Warming Cabinets. The most user-friendly temperature recording devices on the market today are equipped with independent, digitally controlled heating chambers that offer actual temperature and set point displays. Simple plug and play data requires no additional software. With its sleek new appearance, the D-Series is sure to enhance your facility.

For questions, or to place an order, contact our customer service department:

- Phone: **618-476-3550**
- Toll Free: **877-828-9975**
- Email: **sales@macmedical.com**

MADE 
IN THE

DWC243074E-G-4B
(shown with optional Glass Door)



Single Chamber Header Control

STANDARD FEATURES

- "Easy Log" integrated data logger with removable USB – **now standard!**
- Keyed door lock for single & upper chamber units – **now standard!**
- Adjustable feet – **now standard!**
- Automatically records data every 30 minutes
- Internal storage up to 2 years
- Displays actual temperature and set points at all times
- Independent digitally controlled heating chambers
- Rapid warm time (2-6 hours depending on load)
- Keyed temperature lock out
- Push button digital operation
- Large digital display(s)
- Fully insulated to provide uniform heating
- Audible & visual over-temp alarm

OPTIONAL FEATURES

- Full view glass door
- Left hand door hinge
- Mobile base or stand
- 220/240V power supply
- Celsius
- Two (2) recessed unit options
- Seismic braces
- Roll out basket(s) with cool touch handles
- Pass through chamber
- IV/Injection fluids
- Sloped top
- Keyed door lock for intermediate & lower chamber units
- Electronic keypad lock
- Custom sizes available

To Download Data

1. Insert supplied USB flash drive into USB slot.
2. Data download will automatically begin.
3. During download display will read:



4. Once the display shows the temperature again, it is safe to remove the flash drive.
5. Data is saved on the flash drive as a .CSV file for easy import into most spreadsheet programs (e.g. Microsoft Excel).
6. Data is secure (no reporting or connection to any network).

Sample Report

SWC243074 Single, S/N: 062112-D01, 101117

DATE/TIME	TEMPERATURE	°C/°F
10/10/2017 23:12	106	F
10/10/2017 23:43	106	F
10/11/2017 0:12	106	F
10/11/2017 0:43	106	F
10/11/2017 1:12	106	F



Single Chamber Units

SWC151822

Overall Dimensions

15.5"D x 18"W x 22"H
(393.7mm x 457.2mm x 558.8mm)
Optional Adjustable Shelf

Chamber I.D.

13"D x 14"W x 13"H
(330.2mm x 355.6mm x 330.2mm)
1.37 Cubic Feet Storage
Temperature Range 90°-135° F (Tolerance +/- 1° F)

Electrical

120V, 2.9 Amp, 50/60 Hz, .23 kWh (Avg.),
785 BTU/hr (Avg.)

Approximate Capacity

3 Blankets & 8 Solution Bottles (1 Liter Each)



MS1518
Mobile Stand
(sold separately)



WB1518
Roll Out Basket
(sold separately)

No base (NB) standard for this model

SWC182424

Overall Dimensions

20.5"D x 24"W x 24.5"H
(520.7mm x 609.6mm x 622.3mm)
Optional Adjustable Shelf

Chamber I.D.

17"D x 20"W x 15.25"H
(431.8mm x 508mm x 387.3mm)
3.0 Cubic Feet Storage
Temperature Range 90°-160° F (Tolerance +/- 1° F)

Electrical

120V, 2.9 Amp, 50/60 Hz, .23 kWh (Avg.),
785 BTU/hr (Avg.)

Approximate Capacity

9 Blankets & 8 Solution Bottles (1 Liter Each)



MS1824
Mobile Stand
(sold separately)



WB1824
Roll Out Basket
(sold separately)

No base (NB) standard for this model

SWC242424

Overall Dimensions

26.5"D x 24"W x 24.5"H
(673.1mm x 609.6mm x 622.3mm)
1 Adjustable Shelf

Chamber I.D.

23"D x 20"W x 15.25"H
(584.2mm x 508mm x 387.3mm)
4.06 Cubic Feet Storage
Temperature Range 90°-160° F (Tolerance +/- 1° F)

Electrical

120V, 6.3 Amp, 50/60 Hz, .45 kWh (Avg.),
1535 BTU/hr (Avg.)

Approximate Capacity

9 Blankets & 12 Solution Bottles (1 Liter Each)



MS2424
Mobile Stand
(sold separately)



WB2424
Roll Out Basket
(sold separately)

No base (NB) standard for this model

SWC183024

Overall Dimensions

20.5"D x 30"W x 24.5"H
(520.7mm x 762mm x 622.3mm)
1 Adjustable Shelf

Chamber I.D.

17"D x 26"W x 15.25"H
(431.8mm x 660.4mm x 387.3mm)
3.9 Cubic Feet Storage
Temperature Range 90°-160° F (Tolerance +/- 1° F)

Electrical

120V, 5.7 Amp, 50/60 Hz, .45 kWh (Avg.),
1535 BTU/hr (Avg.)

Approximate Capacity

18 Blankets & 8 Solution Bottles (1 Liter Each)



MS1830
Mobile Stand
(sold separately)



WB1830
Roll Out Basket
(sold separately)

No base (NB) standard for this model

SWC243024

Overall Dimensions

26.5"D x 30"W x 24.5"H
(673.1mm x 762mm x 622.3mm)
1 Adjustable Shelf

Chamber I.D.

23"D x 26"W x 15.25"H
(584.2mm x 660.4mm x 387.3mm)
5.27 Cubic Feet Storage
Temperature Range 90°-160° F (Tolerance +/- 1° F)

Electrical

120V, 6.3 Amp, 50/60 Hz, .45 kWh (Avg.),
1535 BTU/hr (Avg.)

Approximate Capacity

18 Blankets & 20 Solution Bottles (1 Liter Each)



MS2430
Mobile Stand
(sold separately)



WB2430
Roll Out Basket
(sold separately)

No base (NB) standard for this model

SWC182436

Overall Dimensions

20.5"D x 24"W x 36"H
(520.7mm x 609.6mm x 914.4mm)
2 Adjustable Shelves

Chamber I.D.

17"D x 20"W x 25"H
(431.8mm x 508mm x 635mm)
5.0 Cubic Feet Storage
Temperature Range 90°-160° F (Tolerance +/- 1° F)

Electrical

120V, 5.7 Amp, 50/60 Hz, .23 kWh (Avg.),
785 BTU/hr (Avg.)

Approximate Capacity

16 Blankets & 20 Solution Bottles (1 Liter Each)



MS1824
Mobile Stand
(sold separately)



WB1824
Roll Out Basket
(sold separately)

2" base (2B) standard for this model

SWC183036

Overall Dimensions

20.5"D x 30"W x 36"H
(520.7mm x 762mm x 914.4mm)
2 Adjustable Shelves

Chamber I.D.

17"D x 26"W x 25"H
(431.8mm x 660.4mm x 635mm)
6.39 Cubic Feet Storage
Temperature Range 90°-160° F (Tolerance +/- 2° F)

Electrical

120V, 5.7 Amp, 50/60 Hz, .45 kWh (Avg.),
1535 BTU/hr (Avg.)

Approximate Capacity

32 Blankets & 36 Solution Bottles (1 Liter Each)



MS1830
Mobile Stand
(sold separately)



WB1830
Roll Out Basket
(sold separately)

2" base (2B) standard for this model

SWC242436

Overall Dimensions

26.5"D x 24"W x 36"H
(673.1mm x 609.6mm x 914.4mm)
2 Adjustable Shelves

Chamber I.D.

23"D x 20"W x 25"H
(584.2mm x 508mm x 635mm)
6.7 Cubic Feet Storage
Temperature Range 90°-160° F (Tolerance +/- 1° F)

Electrical

120V, 6.3 Amp, 50/60 Hz, .45 kWh (Avg.),
1535 BTU/hr (Avg.)

Approximate Capacity

16 Blankets & 25 Solution Bottles (1 Liter Each)



MS2424
Mobile Stand
(sold separately)



WB2424
Roll Out Basket
(sold separately)

2" base (2B) standard for this model

SWC243036

Overall Dimensions

26.5"D x 30"W x 36"H
(673.1mm x 762mm x 914.4mm)
2 Adjustable Shelves

Chamber I.D.

23"D x 26"W x 25"H
(584.2mm x 660.4mm x 635mm)
8.65 Cubic Feet Storage
Temperature Range 90°-160° F (Tolerance +/- 2° F)

Electrical

120V, 6.3 Amp, 50/60 Hz, .45 kWh (Avg.),
1535 BTU/hr (Avg.)

Approximate Capacity

32 Blankets & 40 Solution Bottles (1 Liter Each)



MS2430
Mobile Stand
(sold separately)



WB2430
Roll Out Basket
(sold separately)

2" base (2B) standard for this model

SWC182464

Overall Dimensions

20.5"D x 24"W x 64.75"H
(520.7mm x 609.6mm x 1645mm)
3 Adjustable Shelves

Chamber I.D.

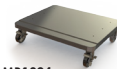
17"D x 20"W x 49.5"H
(431.8mm x 508mm x 1257mm)
9.74 Cubic Feet Storage
Temperature Range 90°-160° F (Tolerance +/- 1° F)

Electrical

120V, 6.5 Amp, 50/60 Hz, .47 kWh (Avg.),
1604 BTU/hr (Avg.)

Approximate Capacity

32 Blankets & 48 Solution Bottles (1 Liter Each)



MB1824
Mobile Base
(sold separately)



WB1824
Roll Out Basket
(sold separately)

4" base (4B) standard for this model

SWC242464

Overall Dimensions

26.5"D x 24"W x 64.75"H
(673.1mm x 609.6mm x 1645mm)
3 Adjustable Shelves

Chamber I.D.

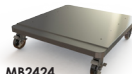
23"D x 20"W x 51"H
(584.2mm x 508mm x 1295mm)
13.60 Cubic Feet Storage
Temperature Range 90°-160° F (Tolerance +/- 3° F)

Electrical

120V, 6.5 Amp, 50/60 Hz, .41 kWh (Avg.),
1604 BTU/hr (Avg.)

Approximate Capacity

80 Blankets & 120 Solution Bottles (1 Liter Each)



MB2424
Mobile Base
(sold separately)



WB2424
Roll Out Basket
(sold separately)

4" base (4B) standard for this model

SWC183064

Overall Dimensions

20.5"D x 30"W x 64.75"H
(520.7mm x 762mm x 1645mm)
3 Adjustable Shelves

Chamber I.D.

17"D x 26"W x 51"H
(431.8mm x 660.4mm x 1295mm)
13.05 Cubic Feet Storage
Temperature Range 90°-160° F (Tolerance +/- 3° F)

Electrical

120V, 6.3 Amp, 50/60 Hz, .41 kWh (Avg.),
1400 BTU/hr (Avg.)

Approximate Capacity

66 Blankets & 72 Solution Bottles (1 Liter Each)



MB1830
Mobile Base
(sold separately)



WB1830
Roll Out Basket
(sold separately)

4" base (4B) standard for this model

SWC243064

Overall Dimensions

26.5"D x 30"W x 64.75"H
(673.1mm x 762mm x 1645mm)
3 Adjustable Shelves

Chamber I.D.

23"D x 26"W x 51"H
(584.2mm x 660.4mm x 1295mm)
17.65 Cubic Feet Storage
Temperature Range 90°-160° F (Tolerance +/- 3° F)

Electrical

120V, 6.5 Amp, 50/60 Hz, .41 kWh (Avg.),
1604 BTU/hr (Avg.)

Approximate Capacity

80 Blankets & 120 Solution Bottles (1 Liter Each)



MB2430
Mobile Base
(sold separately)



WB2430
Roll Out Basket
(sold separately)

4" base (4B) standard for this model

SWC182474

Overall Dimensions

20.5"D x 24"W x 74.5"H
(520.7mm x 609.6mm x 1892mm)
2 Adjustable Shelves, 1 Fixed Shelf

Chamber I.D.

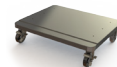
17"D x 20"W x 61"H
(431.8mm x 508mm x 1549mm)
12 Cubic Feet Storage
Temperature Range 90°-160° F (Tolerance +/- 3° F)

Electrical

120V, 6.5 Amp, 50/60 Hz, .47 kWh (Avg.),
1604 BTU/hr (Avg.)

Approximate Capacity

32 Blankets & 60 Solution Bottles (1 Liter Each)



MB1824
Mobile Base
(sold separately)



WB1824
Roll Out Basket
(sold separately)

4" base (4B) standard for this model

SWC183074

Overall Dimensions

20.5"D x 30"W x 74.5"H
(520.7mm x 762mm x 1892mm)
2 Adjustable Shelves, 1 Fixed Shelf

Chamber I.D.

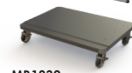
17"D x 26"W x 61"H
(431.8mm x 660.4mm x 1549mm)
15.60 Cubic Feet Storage
Temperature Range 90°-160° F (Tolerance +/- 3° F)

Electrical

120V, 6.5 Amp, 50/60 Hz, .47 kWh (Avg.),
1604 BTU/hr (Avg.)

Approximate Capacity

80 Blankets & 72 Solution Bottles (1 Liter Each)



MB1830
Mobile Base
(sold separately)



WB1830
Roll Out Basket
(sold separately)

4" base (4B) standard for this model

SWC242474

Overall Dimensions

26.5"D x 24"W x 74.5"H
(673.1mm x 609.6mm x 1892mm)
2 Adjustable Shelves, 1 Fixed Shelf

Chamber I.D.

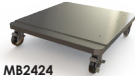
23"D x 20"W x 61"H
(584.2mm x 508mm x 1549mm)
16.24 Cubic Feet Storage
Temperature Range 90°-160° F (Tolerance +/- 3° F)

Electrical

120V, 6.5 Amp, 50/60 Hz, .47 kWh (Avg.),
1604 BTU/hr (Avg.)

Approximate Capacity

80 Blankets & 120 Solution Bottles (1 Liter Each)



MB2424
Mobile Base
(sold separately)



WB2424
Roll Out Basket
(sold separately)

4" base (4B) standard for this model

SWC243074

Overall Dimensions

26.5"D x 30"W x 74.5"H
(673.1mm x 762mm x 1892mm)
2 Adjustable Shelves, 1 Fixed Shelf

Chamber I.D.

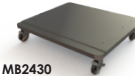
23"D x 26"W x 61"H
(584.2mm x 660.4mm x 1549mm)
21.1 Cubic Feet Storage
Temperature Range 90°-160° F (Tolerance +/- 3° F)

Electrical

120V, 6.5 Amp, 50/60 Hz, .47 kWh (Avg.),
1604 BTU/hr (Avg.)

Approximate Capacity

80 Blankets & 120 Solution Bottles (1 Liter Each)



MB2430
Mobile Base
(sold separately)



WB2430
Roll Out Basket
(sold separately)

4" base (4B) standard for this model

Dual Chamber Units

DWC182464T

(T = Chambers in Thirds)

Overall Dimensions

20.5"D x 24"W x 64.75"H
(520.7mm x 609.6mm x 1645mm)
7.47 Cubic Feet Storage, 3 Adjustable Shelves

Upper Chamber I.D.

17"D x 20"W x 13.5"H
(431.8mm x 508mm x 342.9mm)
2.65 Cubic Feet Storage
Temperature Range 90°-160° F (Tolerance +/- 1° F)

Lower Chamber I.D.

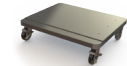
17"D x 20"W x 24.5"H
(431.8mm x 508mm x 622.3mm)
4.82 Cubic Feet Storage
Temperature Range 90°-160° F (Tolerance +/- 2° F)

Electrical

120V, 8.9 Amp, 50/60 Hz, .65 kWh (Avg.),
2218 BTU/hr (Avg.)

Approximate Capacity

26 Blankets & 36 Solution Bottles (1 Liter Each)



MB1824
Mobile Base
(sold separately)



WB1824
Roll Out Basket
(sold separately)

4" base (4B) standard for this model

DWC242464T

(T = Chambers in Thirds)

Overall Dimensions

26.5"D x 24"W x 64.75"H
(673.1mm x 609.6mm x 1645mm)
10.11 Cubic Feet Storage, 3 Adjustable Shelves

Upper Chamber I.D.

23"D x 20"W x 13.5"H
(584.2mm x 508mm x 342.9mm)
3.59 Cubic Feet Storage
Temperature Range 90°-160° F (Tolerance +/- 2° F)

Lower Chamber I.D.

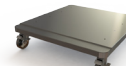
23"D x 20"W x 24.5"H
(584.2mm x 508mm x 622.3mm)
6.52 Cubic Feet Storage
Temperature Range 90°-160° F (Tolerance +/- 2° F)

Electrical

120V, 8.3 Amp, 50/60 Hz, .60 kWh (Avg.),
2047 BTU/hr (Avg.)

Approximate Capacity

52 Blankets & 80 Solution Bottles (1 Liter Each)



MB2424
Mobile Base
(sold separately)



WB2424
Roll Out Basket
(sold separately)

4" base (4B) standard for this model

DWC183064T

(T = Chambers in Thirds)

Overall Dimensions

20.5"D x 30"W x 64.75"H
(520.7mm x 762mm x 1645mm)
9.72 Cubic Feet Storage, 3 Adjustable Shelves

Upper Chamber I.D.

17"D x 26"W x 13.5"H
(431.8mm x 660.4mm x 342.9mm)
3.45 Cubic Feet Storage
Temperature Range 90°-160° F (Tolerance +/- 1° F)

Lower Chamber I.D.

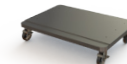
17"D x 26"W x 24.5"H
(431.8mm x 660.4mm x 622.3mm)
6.27 Cubic Feet Storage
Temperature Range 90°-160° F (Tolerance +/- 2° F)

Electrical

120V, 8.3 Amp, 50/60 Hz, .60 kWh (Avg.),
2047 BTU/hr (Avg.)

Approximate Capacity

50 Blankets & 54 Solution Bottles (1 Liter Each)



MB1830
Mobile Base
(sold separately)



WB1830
Roll Out Basket
(sold separately)

4" base (4B) standard for this model

DWC243064T

(T = Chambers in Thirds)

Overall Dimensions

26.5"D x 30"W x 64.75"H
(673.1mm x 762mm x 1645mm)
13.15 Cubic Feet Storage, 3 Adjustable Shelves

Upper Chamber I.D.

23"D x 26"W x 13.5"H
(584.2mm x 660.4mm x 342.9mm)
4.67 Cubic Feet Storage
Temperature Range 90°-160° F (Tolerance +/- 2° F)

Lower Chamber I.D.

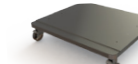
23"D x 26"W x 24.5"H
(584.2mm x 660.4mm x 622.3mm)
8.48 Cubic Feet Storage
Temperature Range 90°-160° F (Tolerance +/- 2° F)

Electrical

120V, 8.9 Amp, 50/60 Hz, .65 kWh (Avg.),
2218 BTU/hr (Avg.)

Approximate Capacity

52 Blankets & 96 Solution Bottles (1 Liter Each)



MB2430
Mobile Base
(sold separately)



WB2430
Roll Out Basket
(sold separately)

4" base (4B) standard for this model

DWC182474T

(T = Chambers in Thirds)

Overall Dimensions

20.5"D x 24"W x 74.5"H
(520.7mm x 609.6mm x 1892mm)
9.44 Cubic Feet Storage, 3 Adjustable Shelves

Upper Chamber I.D.

17"D x 20"W x 15.25"H
(431.8mm x 508mm x 387.3mm)
2.65 Cubic Feet Storage
Temperature Range 90°-160° F (Tolerance +/- 1° F)

Lower Chamber I.D.

17"D x 20"W x 34.5"H
(431.8mm x 508mm x 876.3mm)
6.79 Cubic Feet Storage
Temperature Range 90°-160° F (Tolerance +/- 2° F)

Electrical

120V, 8.9 Amp, 50/60 Hz, .65 kWh (Avg.),
2218 BTU/hr (Avg.)

Approximate Capacity

32 Blankets & 48 Solution Bottles (1 Liter Each)



MB1824

Mobile Base
(sold separately)



WB1824

Roll Out Basket
(sold separately)

4" base (4B) standard for this model

DWC242474T

(T = Chambers in Thirds)

Overall Dimensions

26.5"D x 24"W x 74.5"H
(673.1mm x 609.6mm x 1892mm)
13.24 Cubic Feet Storage, 3 Adjustable Shelves

Upper Chamber I.D.

23"D x 20"W x 15.25"H
(584.2mm x 508mm x 387.3mm)
4.06 Cubic Feet Storage
Temperature Range 90°-160° F (Tolerance +/- 1° F)

Lower Chamber I.D.

23"D x 20"W x 34.5"H
(584.2mm x 508mm x 876.3mm)
9.18 Cubic Feet Storage
Temperature Range 90°-160° F (Tolerance +/- 3° F)

Electrical

120V, 8.9 Amp, 50/60 Hz, .65 kWh (Avg.),
2218 BTU/hr (Avg.)

Approximate Capacity

52 Blankets & 80 Solution Bottles (1 Liter Each)



MB2424

Mobile Base
(sold separately)



WB2424

Roll Out Basket
(sold separately)

4" base (4B) standard for this model

DWC183074T

(T = Chambers in Thirds)

Overall Dimensions

20.5"D x 30"W x 74.5"H
(520.7mm x 762mm x 1892mm)
12.27 Cubic Feet Storage, 3 Adjustable Shelves

Upper Chamber I.D.

17"D x 26"W x 15.25"H
(431.8mm x 660.4mm x 387.3mm)
3.45 Cubic Feet Storage
Temperature Range 90°-160° F (Tolerance +/- 1° F)

Lower Chamber I.D.

17"D x 26"W x 34.5"H
(431.8mm x 660.4mm x 876.3mm)
8.82 Cubic Feet Storage
Temperature Range 90°-160° F (Tolerance +/- 2° F)

Electrical

120V, 8.3 Amp, 50/60 Hz, .82 kWh (Avg.),
2047 BTU/hr (Avg.)

Approximate Capacity

52 Blankets & 72 Solution Bottles (1 Liter Each)



MB1830

Mobile Base
(sold separately)



WB1830

Roll Out Basket
(sold separately)

4" base (4B) standard for this model

DWC243074T

(T = Chambers in Thirds)

Overall Dimensions

26.5"D x 30"W x 74.5"H
(673.1mm x 762mm x 1892mm)
17.21 Cubic Feet Storage, 3 Adjustable Shelves

Upper Chamber I.D.

23"D x 26"W x 15.25"H
(584.2mm x 660.4mm x 387.3mm)
5.28 Cubic Feet Storage
Temperature Range 90°-160° F (Tolerance +/- 1° F)

Lower Chamber I.D.

23"D x 26"W x 34.5"H
(584.2mm x 660.4mm x 876.3mm)
11.93 Cubic Feet Storage
Temperature Range 90°-160° F (Tolerance +/- 3° F)

Electrical

120V, 12.5 Amp, 50/60 Hz, .90 kWh (Avg.),
3071 BTU/hr (Avg.)

Approximate Capacity

52 Blankets & 120 Solution Bottles (1 Liter Each)



MB2430

Mobile Base
(sold separately)



WB2430

Roll Out Basket
(sold separately)

4" base (4B) standard for this model

DWC182474E

(E = Equal Chambers)

Overall Dimensions

20.5"D x 24"W x 74.5"H
(520.7mm x 609.6mm x 1892mm)
10.21 Cubic Feet Storage, 4 Adjustable Shelves

Upper Chamber I.D.

17"D x 20"W x 25"H
(431.8mm x 508mm x 635mm)
4.97 Cubic Feet Storage
Temperature Range 90°-160° F (Tolerance +/- 2° F)

Lower Chamber I.D.

17"D x 20"W x 26"H
(431.8mm x 508mm x 660.4mm)
5.24 Cubic Feet Storage
Temperature Range 90°-160° F (Tolerance +/- 2° F)

Electrical

120V, 8.9 Amp, 50/60 Hz, .65 kWh (Avg.),
2218 BTU/hr (Avg.)

Approximate Capacity

44 Blankets & 48 Solution Bottles (1 Liter Each)



MB1824

Mobile Base
(sold separately)



WB1824

Roll Out Basket
(sold separately)

4" base (4B) standard for this model

DWC183074E

(E = Equal Chambers)

Overall Dimensions

20.5"D x 30"W x 74.5"H
(520.7mm x 762mm x 1892mm)
13.04 Cubic Feet Storage, 4 Adjustable Shelves

Upper Chamber I.D.

17"D x 26"W x 25"H
(431.8mm x 660.4mm x 635mm)
6.39 Cubic Feet Storage
Temperature Range 90°-160° F (Tolerance +/- 2° F)

Lower Chamber I.D.

17"D x 26"W x 26"H
(431.8mm x 660.4mm x 660.4mm)
6.65 Cubic Feet Storage
Temperature Range 90°-160° F (Tolerance +/- 2° F)

Electrical

120V, 11.4 Amp, 50/60 Hz, .82 kWh (Avg.),
2798 BTU/hr (Avg.)

Approximate Capacity

64 Blankets & 72 Solution Bottles (1 Liter Each)



MB1830

Mobile Base
(sold separately)



WB1830

Roll Out Basket
(sold separately)

4" base (4B) standard for this model

DWC242474E

(E = Equal Chambers)

Overall Dimensions

26.5"D x 24"W x 74.5"H
(673.1mm x 609.6mm x 1892mm)
13.64 Cubic Feet Storage, 4 Adjustable Shelves

Upper Chamber I.D.

23"D x 20"W x 25"H
(584.2mm x 508mm x 635mm)
8.65 Cubic Feet Storage
Temperature Range 90°-160° F (Tolerance +/- 2° F)

Lower Chamber I.D.

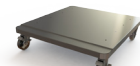
23"D x 20"W x 26"H
(584.2mm x 508mm x 660.4mm)
6.99 Cubic Feet Storage
Temperature Range 90°-160° F (Tolerance +/- 2° F)

Electrical

120V, 8.9 Amp, 50/60 Hz, .65 kWh (Avg.),
2218 BTU/hr (Avg.)

Approximate Capacity

64 Blankets & 80 Solution Bottles (1 Liter Each)



MB2424
Mobile Base
(sold separately)



WB2424
Roll Out Basket
(sold separately)

4" base (4B) standard for this model

DWC243074E

(E = Equal Chambers)

Overall Dimensions

26.5"D x 30"W x 74.5"H
(673.1mm x 762mm x 1892mm)
17.64 Cubic Feet Storage, 4 Adjustable Shelves

Upper Chamber I.D.

23"D x 26"W x 25"H
(584.2mm x 660.4mm x 635mm)
8.65 Cubic Feet Storage
Temperature Range 90°-160° F (Tolerance +/- 2° F)

Lower Chamber I.D.

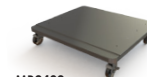
23"D x 26"W x 26"H
(584.2mm x 660.4mm x 660.4mm)
8.99 Cubic Feet Storage
Temperature Range 90°-160° F (Tolerance +/- 2° F)

Electrical

120V, 12.5 Amp, 50/60 Hz, .90 kWh (Avg.),
3071 BTU/hr (Avg.)

Approximate Capacity

64 Blankets & 120 Solution Bottles (1 Liter Each)



MB2430
Mobile Base
(sold separately)



WB2430
Roll Out Basket
(sold separately)

4" base (4B) standard for this model

Triple Chamber Units

TWC183078

Overall Dimensions

20.5"D x 30"W x 78.75"H
(520.7mm x 762mm x 2000mm)
10.36 Cubic Feet Storage, 1 Adjustable Shelf

Upper Chamber I.D.

17"D x 26"W x 11.25"H
(431.8mm x 660.4mm x 285.7mm)
2.88 Cubic Feet Storage
Temperature Range 90°-110° F (Tolerance +/- 1° F)

Intermediate Chamber I.D.

17"D x 26"W x 10.75"H
(431.8mm x 660.4mm x 273mm)
2.75 Cubic Feet Storage
Temperature Range 90°-135° F (Tolerance +/- 1° F)

Lower Chamber I.D.

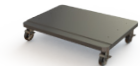
17"D x 26"W x 18.5"H
(431.8mm x 660.4mm x 469.9mm)
4.73 Cubic Feet Storage
Temperature Range 90°-160° F (Tolerance +/- 1° F)

Electrical

120V, 12.9 Amp, 50/60 Hz, .90 kWh (Avg.),
3071 BTU/hr (Avg.)

Approximate Capacity

62 Blankets & 54 Solution Bottles (1 Liter Each)



MB1830
Mobile Base
(sold separately)



WB1830
Roll Out Basket
(sold separately)

4" base (4B) standard for this model

TWC243078

Overall Dimensions

26.5"D x 30"W x 78.75"H
(673.1mm x 762mm x 2000mm)
14.01 Cubic Feet Storage, 1 Adjustable Shelf

Upper Chamber I.D.

23"D x 26"W x 11.25"H
(584.2mm x 660.4mm x 285.7mm)
3.89 Cubic Feet Storage
Temperature Range 90°-110° F (Tolerance +/- 1° F)

Intermediate Chamber I.D.

23"D x 26"W x 10.75"H
(584.2mm x 660.4mm x 273mm)
3.72 Cubic Feet Storage
Temperature Range 90°-135° F (Tolerance +/- 1° F)

Lower Chamber I.D.

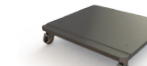
23"D x 26"W x 18.5"H
(584.2mm x 660.4mm x 469.9mm)
6.4 Cubic Feet Storage
Temperature Range 90°-160° F (Tolerance +/- 1° F)

Electrical

120V, 12.9 Amp, 50/60 Hz, .90 kWh (Avg.),
3071 BTU/hr (Avg.)

Approximate Capacity

62 Blankets & 90 Solution Bottles (1 Liter Each)



MB2430
Mobile Base
(sold separately)



WB2430
Roll Out Basket
(sold separately)

4" base (4B) standard for this model

the **NEXT**
generation
of warming cabinets

D-Series Options

Door Types

- Stainless Steel (Standard)
- Glass

Door Hinges

- Right (Standard)
- Left

Base Styles

- 2" (not available for SWC151822)
- 4" (not available for SWC151822)
- 6" (not available for SWC151822)
- No Base
- Mobile Base

Note: Additional shelving available for purchase

Other Options

- 220/240V Power Supply
- Celsius
- Two (2) Recessed Unit Options:
R1 = Insulation Wrap, No Top Panel, No Side Panels, and No Trim Kit
R2 = Top Panel, Side Panels, and Trim Kit
- Seismic Braces
- Roll Out Basket(s)
- Pass Through Chamber
- IV/Injection Fluids
- Sloped Top (not available for SWC151822)
- Intermediate Chamber Door Lock (only available for Triple Chamber Units)
- Lower Chamber Door Lock (only available for Dual and Triple Chamber Units)
- Electronic Keypad Lock (only available for Single Chamber Units)

Contact Us

For questions or to place an order, contact our customer service department:

Phone: 618-476-3550

Toll Free: 877-828-9975

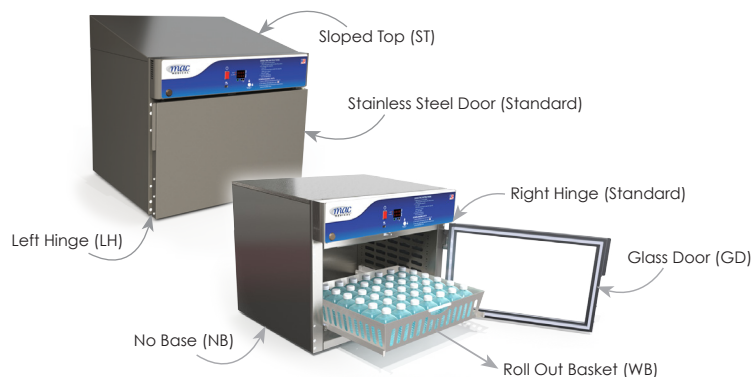
Fax: 618-476-3337

Email: sales@macmedical.com

Website: www.macmedical.com

Customer needs are our first priority.

MADE IN THE USA

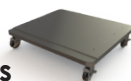


Mobile Stands, Mobile Bases, and Baskets



Mobile Stands

Model #	Overall Dimensions
MS1518	18"D x 21"W x 34"H
MS1824	20"D x 28"W x 34"H
MS1830	20"D x 34"W x 34"H
MS2424	26"D x 26"W x 34"H
MS2430	26"D x 34"W x 34"H



Mobile Bases

Model #	Overall Dimensions
MB1824	20"D x 25"W x 6.75"H
MB1830	20"D x 31"W x 6.75"H
MB2424	26"D x 25"W x 6.75"H
MB2430	26"D x 31"W x 6.75"H



Roll Out Baskets

Model #	Overall Dimensions
WB1518	11.8"D x 11.6"W x 4.875"H
WB1824	15.8"D x 17.6"W x 4.875"H
WB1830	15.8"D x 23.6"W x 4.875"H
WB2424	21.8"D x 17.6"W x 4.875"H
WB2430	21.8"D x 23.6"W x 4.875"H

Note: All warming cabinet mobile stands, mobile bases, and baskets are sold separately.



How to Order D-Series

Model #	Overall Size	Chambers	Door Type	Door Hinge	Base Style	Other Options
SWC151822	15.5"D x 18"W x 22"H	Single	G = Glass Door	LH = Left Hinge	† 2B = 2" Base	220 = 220/240V Power Supply
SWC182424	20.5"D x 24"W x 24.5"H	Single	Blank = Stainless Steel Door (Standard)	Blank = Right Hinge (Standard)	† 4B = 4" Base	C = Celsius
SWC242424	26.5"D x 24"W x 24.5"H	Single			† 6B = 6" Base	R1 = Recessed Unit with Insulation Wrap, No Top Panel, No Side Panels, and No Trim Kit
SWC183024	20.5"D x 30"W x 24.5"H	Single			NB = No Base	
SWC243024	26.5"D x 30"W x 24.5"H	Single			MB = Mobile Base	
SWC182436	20.5"D x 24"W x 36" H	Single				
SWC183036	20.5"D x 30"W x 36"H	Single				R2 = Recessed Unit with Top Panel, Side Panels, and Trim Kit
SWC242436	26.5"D x 24"W x 36"H	Single				
SWC243036	26.5"D x 30"W x 36"H	Single				
SWC182464	20.5"D x 24"W x 64.75"H	Single				SB = Seismic Braces
SWC242464	26.5"D x 24"W x 64.75"H	Single				WB = Roll Out Basket
SWC183064	20.5"D x 30"W x 64.75"H	Single				
SWC243064	26.5"D x 30"W x 64.75"H	Single				P = Pass Through Chamber
SWC182474	20.5"D x 24"W x 74.5"H	Single				IV = IV/Injection Fluids
SWC183074	20.5"D x 30"W x 74.5"H	Single				† ST = Sloped Top
SWC242474	26.5"D x 24"W x 74.5"H	Single		†† IDL = Intermediate Chamber Door Lock		
SWC243074	26.5"D x 30"W x 74.5"H	Single		††† LDL = Lower Chamber Door Lock		
DWC182464T*	20.5"D x 24"W x 64.75"H	Dual		†††† EL = Electronic Keypad Lock		
DWC242464T*	26.5"D x 24"W x 64.75"H	Dual				
DWC183064T*	20.5"D x 30"W x 64.75"H	Dual				
DWC243064T*	26.5"D x 30"W x 64.75"H	Dual				
DWC182474T*	20.5"D x 24"W x 74.5"H	Dual				
DWC242474T*	26.5"D x 24"W x 74.5"H	Dual				
DWC183074T*	20.5"D x 30"W x 74.5"H	Dual				
DWC243074T*	26.5"D x 30"W x 74.5"H	Dual				
DWC182474E**	20.5"D x 24"W x 74.5"H	Dual				
DWC183074E**	20.5"D x 30"W x 74.5"H	Dual				
DWC242474E**	26.5"D x 24"W x 74.5"H	Dual				
DWC243074E**	26.5"D x 30"W x 74.5"H	Dual				
TWC183078	20.5"D x 30"W x 78.75"H	Triple				
TWC243078	26.5"D x 30"W x 78.75"H	Triple				

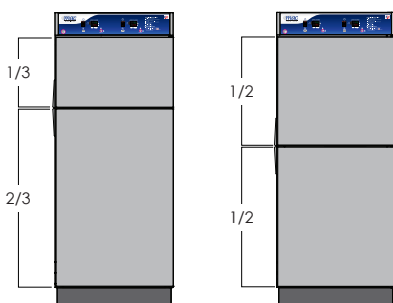
the **NEXT** generation of warming cabinets

† Not available for SWC151822
†† Only available for Triple Chamber Units
††† Only available for Dual and Triple Chamber Units
†††† Only available for Single Chamber Units

the **NEXT**
generation
of warming cabinets

* T = Chambers in Thirds

** E = Equal Chambers



Example 1: Model # SWC182464, Glass Door, Left Hinge, Mobile Base, Sloped Top = Order Model # SWC182464-G-LH-MB-ST

Example 2: Model # DWC243074E, Stainless Steel Door, Right Hinge, 4" Base, Celsius, Lower Chamber Door Lock = Order Model # DWC243074E-4B-C-LDL

*Note: Additional sizes available for specific requirements.
Please contact us for further assistance.*



Warranty Information



Limited Lifetime Warranty

MAC Medical warrants to the original purchaser that its Proprietary Products will be free from defects in workmanship or materials under normal use and service for the life of the product, so long as owned by the original purchaser, according to the limitations set forth below. Defective products shall be repaired or replaced at MAC Medical's option at no cost to the original purchaser provided:

1. The customer must obtain a written return authorization supplied by MAC Medical's customer service department. The product must be returned, properly packaged, with a copy of the original sales receipt and copy of the RMA authorization. Please call (877) 828-9975 or (618) 476-3550 to receive a return authorization.
2. The customer must pre-pay freight charges to and from MAC Medical and must ship merchandise properly packaged, in a way the product will not be damaged during transit to the factory. MAC Medical does not warranty any freight damage to or from the factory. It is the customer's responsibility to inspect the product for packaging damage before signing the BOL.

This warranty does not apply to products, which have been subject to abuse, misuse, accident, modification, alteration, tampering, negligence, lack of routine maintenance or misapplication; or products that have been repaired by other than MAC Medical or its authorized representatives.

This warranty does not apply to glass, fabrics, vinyl, seat coverings, cushions, padding or their stitching, gluing or installation. Component parts not manufactured by MAC Medical, such as casters, caster inserts, any components made from rubber or plastic, circuit boards, fan heaters, plumbing parts, electrical switches and other components are also excluded. For these component parts, MAC Medical will pass on the original manufacturer's warranty to MAC Medical equipment original purchasers. Please consult factory for questions regarding the warranties of these component parts. This warranty does not apply to custom fabricated products. Consult factory.

UNLESS EXPRESSLY SET FORTH IN THIS WARRANTY, THERE ARE NO OTHER WARRANTIES, WHETHER EXPRESS OR IMPLIED, OF FITNESS AND / OR MERCHANTABILITY OR ANY OTHER WARRANTY IMPLIED BY CUSTOM, USAGE OR COURSE OF DEALING.

Liability of MAC Medical under this warranty is limited to the repair and / or replacement of any products. MAC Medical specifically excludes and disclaims any responsibility for any incidental or consequential damages claimed to have arisen from any defect in workmanship or materials. No representative has any authority to change or enlarge the above warranty or MAC Medical liability. This document supersedes all previous warranty provisions.

MAC Medical, Inc.
Printed in USA
Publication No. BFU-01 Rev C
January 2018

Information regarding products are
subject to change without prior notice.



Customer needs are our first priority.

Corporate Office
325 West Main Street
Belleville, IL 62220

Manufacturing Plant
820 South Mulberry Street
Millstadt, IL 62260

Phone: 618-476-3550 • Toll Free: 877-828-9975 • www.macmedical.com